



Canberra Joint Solutions Leaders Roundtable
Committee Room 1R3, Parliament House, Canberra
19 June 2013

Participants with interests in aged care, disability and health met to discuss the urgent need for coordinated care pathways for young people with complex support needs at the Canberra **Joint Solutions Leaders Roundtable** convened by the Young People In Nursing Homes National Alliance in Parliament House.

The Hon. Amanda Rishworth, Parliamentary Secretary for Disabilities and Carers, welcomed participants to the roundtable and spoke of the opportunity the advent of DisabilityCare Australia offered to all Australians with disability.

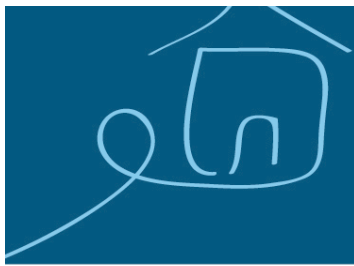
After watching a short video that outlined the difficulties one family had confronted in their efforts to get the coordinated service response their daughter needed, participants engaged in a thought provoking discussion about the need; the challenges presented by cost silos; the benefits that coordinated services across sectors could deliver for those with complex health and other support needs; as well as strategies to deliver these service reforms.

Some of the key points contributed included

- Previous trials and pilots have demonstrated the benefits to individuals and the savings to programs that are available through an integrated program response with appropriate coordination.
- A number of pilots and trials have been conducted which comprehensively support the need and the value gained in delivering coordinated care responses for the YPINH group. Rather than more trials and pilots, implementation of coordinated care approaches is needed that take account of the learnings of these previous attempts.
- General agreement that the Health sector needs to be involved and a contributor to coordinated service responses; and to participate in constructing integrated pathway models.
- Recognition that the states are responsible for delivering health services and that each maintains their own costs offers opportunity to raise awareness of potential cost and efficiency savings through joined up services.
- Engagement with state and federal health representatives on the need for health's proactive involvement and contribution to coordinated service responses remains elusive. Indicating the economic value to the health system of the latter's involvement in coordinated responses was offered as productive way of engaging with the health sector.



- Planning for service responses to support YPINH and others with complex health needs must start well before discharge from acute care and involve contribution and input from all service areas.
- Planning needs to incorporate arrangements for short, medium and long term service responses with roles made clear for each program area.
- Local knowledge and active networks are critical to successfully deliver joined up supports.
- A coordinated response must involve housing services as well as health, disability, aged care et al.
- DisabilityCare Australia is aware of the need for coordination and input from the various program areas. The Scheme's Local Area Coordinators (LACs) will undertake this role as part of the planning process for scheme participants.
- DisabilityCare Australia's service responses and requirements will influence responses in other program areas, particularly health, aged care and housing.
- Aged care service providers will have opportunity to register as DisabilityCare Australia service providers for DisabilityCare Australia Scheme participants. Aged care providers will need to be able to cost the care they provide.
- The real cost of supporting a younger person in a residential aged care service is unknown and undertaking a cost of care study may be timely.
- While the launch sites are operational and attending to their imperatives, opportunities exist outside these areas to undertake a range of investigations with capacity to inform and assist DisabilityCare Australia's role and operations at both full Scheme implementation and as it matures.
- Coordination across programs involves a huge cultural change. Data is critically important in this process.
- There is an imperative to keep jurisdictions focused on these types of systemic improvements as well as their interest in DisabilityCare Australia.
- Community based slow stream rehabilitation programs, like Victoria's *Slow To Recover Acquired Brain Injury Rehabilitation Program*, dramatically improved the lives of people and need to be considered as part of integrated responses.
- Anecdotal evidence exists that some states are closing or reducing some specialist disability services in anticipation of DisabilityCare Australia taking responsibility for costs and service management and are doing so well ahead of full Scheme launch.



- Non launch site areas present on going concerns regarding management of present and increasing levels of need for services prior to DisabilityCare Australia coming to full scheme.
- The Alliance undertook to coordinate efforts around the points raised over coming months.

At the Roundtable's conclusion, the Alliance's National Director, Dr Bronwyn Morkham, thanked everyone for their contributions and indicated the Alliance would be working to develop the proposals that had been discussed.



Roundtable participants

Hon. Amanda Rishworth, Parliamentary Secretary for Disabilities and Carers

Alan Blackwood, Director of Policy and Innovation, Young People In Nursing Homes National Alliance

David Bowen, CEO, NDIS Transition Authority

John Forsey, Disability and Carers Policy Branch, Department of Families and Housing, Community Services and Indigenous Affairs (FaHCSIA)

Michelle French, Occupational Therapist, Michelle French and Associates

Elly Gardner, Coordinator of Information and Support, Young People In Nursing Homes National Alliance

Rob Hurmann, Policy and Evaluation Branch, Department of Health and Ageing (DoHA)

Evan Lewis, Disability and Carers Policy Branch, Department of Families and Housing, Community Services and Indigenous Affairs (FaHCSIA)

Jen Lindon, Disability and Carers Policy Branch, Department of Families and Housing, Community Services and Indigenous Affairs (FaHCSIA)

Ros Madden, Senior Research Fellow, University of Sydney

Peter Matwijiw, ACT Health Services Directorate

Bronwyn Morkham, National Director, Young People In Nursing Homes National Alliance

Sue Race, Divisional Director, Subacute and Residential Aged Care Services, Western Health

Kay Richards, National Policy Manager, Leading Aged Services Australia, National Office

Denise Ryan, Control and Choice Client Pathway Section, National Disability Insurance Scheme Design Branch, Department of Families and Housing, Community Services and Indigenous Affairs (FaHCSIA)

Lorna Sullivan, Executive Director, Disability Services ACT

Keith Tracey-Patte, Policy and Evaluation Branch, Department of Health and Ageing (DoHA)